



---

[www.ams.co.kr](http://www.ams.co.kr)

e-Class One Rm, 1401, #99, Centumdong-ro  
Heundae-Gu, Busan, Korea

**Tel** +82. 51. 293. 8641  
**Fax** +82. 51. 293. 8642

2021.10 Design & Print by dallshop

# Contents

## BUSINESS OVERVIEW

### 1 MARINE & OFFSHORE

- 06 Hull
- 07 System & Machinery
- 09 Outfitting / Accomodation
- 10 Electric & Electronic
- 11 Consumables

### 2 LAND INDUSTRIAL

- 13 Energy
- 14 Environment
- 17 Industrial Machinery
- 17 Steel Making Plant

### 3 COMPANY OVERVIEW

- 18 National export awards  
Company history  
Organization chart
- 19 Global business partners

## Thank you

for your dear interest in the company

Initially started as a small Shipbuilding equipments export specialist in 1995, AMS Co., Ltd. has proven itself to be the leader and export powerhouse amongst competitors by showing exceptional growth and business expansion that were unprecedented in the industry.

Since the company's foundation, AMS have striven to surprise our customers and industry rivals by promoting and working with world class domestic manufacturers to supply Korean quality products to the rest of the world for 26 reliable years.

For years to come, AMS will exercise cumulated experience, unparalleled expertise and knowledges to expand and increase influence on the new emerging markets to offer our customers with ever evolving product options and services.

We believe that in order to maintain competitive advantage in today's hyper competitive market; the company must act quickly to reach potential customers in the emerging markets and be innovative in expanding company's operations. However, foremost, AMS believe that only through our business partners' and customers' success, we will achieve total global success.



# BUSINESS OVERVIEW

SINCE 1995. Your Promising Partner!

MARINE & OFFSHORE

LAND INDUSTRIAL

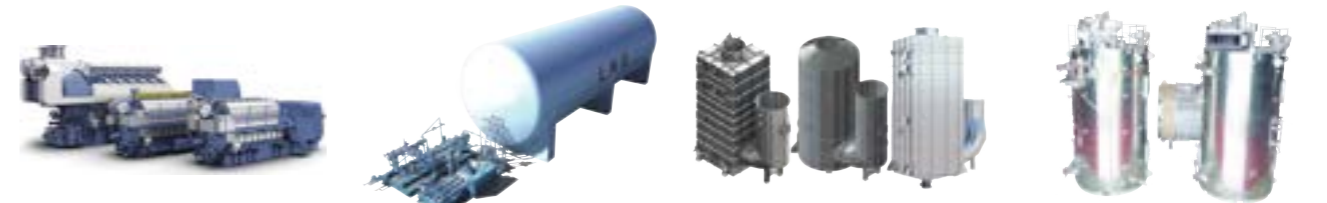


# 01 MARINE & OFFSHORE

SINCE 1995. Your Promising Partner!



## SYSTEM & MACHINERY



Dual Fuel Gen. Engine

FGSS

Scrubber

Dual Fuel Boiler



Heat Exchanger

Fresh Water Unit

Fuel Oil Supply Unit

Sewage Treatment Plant



Emergency Generator

BWMS

Hydraulic Top Bracing

Crane

## HULL

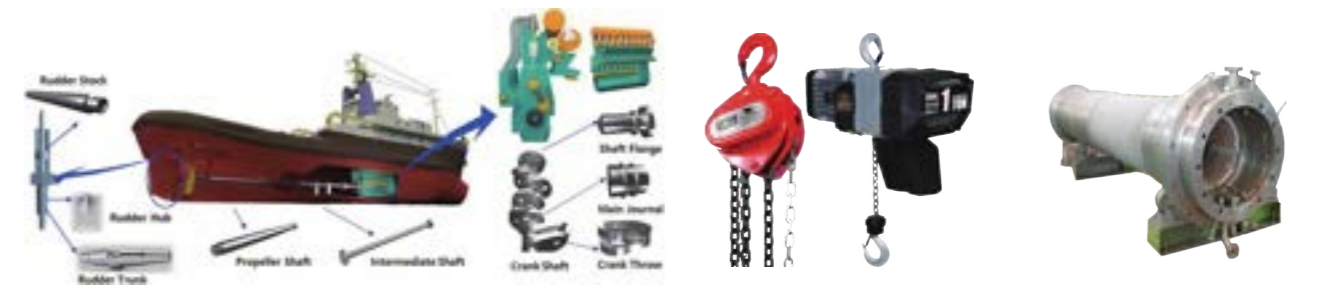


Mega Block

Main Hull Block

Tank Top Unit

Full/Semi Spade Rudder



Forging Parts

Chain Block/Hoist

Stern Tube Unit

# 01 MARINE & OFFSHORE

SINCE 1995. Your Promising Partner!



## OUTFITTING / ACCOMMODATION



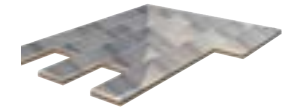
Cabin Unit



Unit Toilet



Panel



Floating Floor



ETA



High Velocity P/V Valve



Expansion Joint



Air Vent Head



Galley Equipments



Fire Ext. Systems



Accommodation Ladder



Lashing Bridge



Fan & Blower



SUS Pipe



Cryogenic Valve



Cryogenic Strainer



Butterfly valve



Eductor



Davit



Steel Anchor



### ELECTRIC & ELECTRONIC

### CONSUMABLES



Lighting&Switches/Socket



Marine Telephone



Anemometer



Rudder Angle Indicator



Hoses



Steel Shot Greet



Tank Monitoring System



MGPS



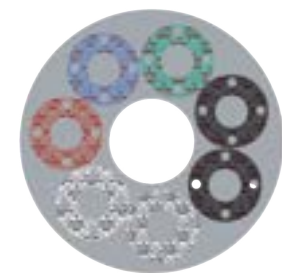
ICCP



SED



Ropes



Gaskets & Packings



Transformers



Multi Core Tube



Elec. Cables



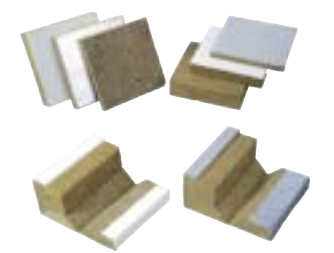
ESBD



Ceramic Bead & Welding Backup Tape



Welding Materials



Insulation Materials

# 02 LAND INDUSTRIAL

SINCE 1995. Your Promising Partner!



## ENERGY



Spherical Tank



Atmospheric Storage Tank



Magnetic Separator



Solar Panel & Inverter



Steam Condenser



Bare Tube Type Inter/  
After Cooler



Air Fan Cooler



Lube Oil Unit



Piping



Forging

# 02 LAND INDUSTRIAL

SINCE 1995. Your Promising Partner!



## ENVIRONMENT



Water Treatment System

Cooling Tower

Water/Steam Drum



Grab & Cranes

Rotary Kiln

Waste Feeder & Grate System



Fans & Blowers

Dearator

Cooling Unit

Enclosure



Waste Heat Boiler

Plant Steel Structures

Conveyers



Elastomeric Bearing

Ashes Extractor

Pipe Fittings



SINCE 1995. Your Promising Partner!



## INDUSTRIAL MACHINERY



High Voltage Switch Gear



Magnet Crane



Overhead Crane



Gantry Crane



Goliath Crane



Spreader



Cable Reel



Auto Filter

## STEEL MAKING PLANT



Silencer



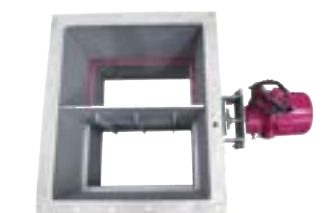
Reducer



Geared Coupling



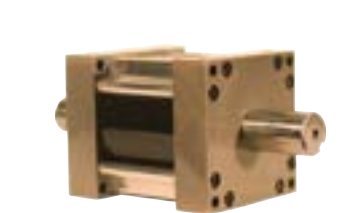
Bellows Exp. Joint



Damper



Hyd. Motor, Actuator



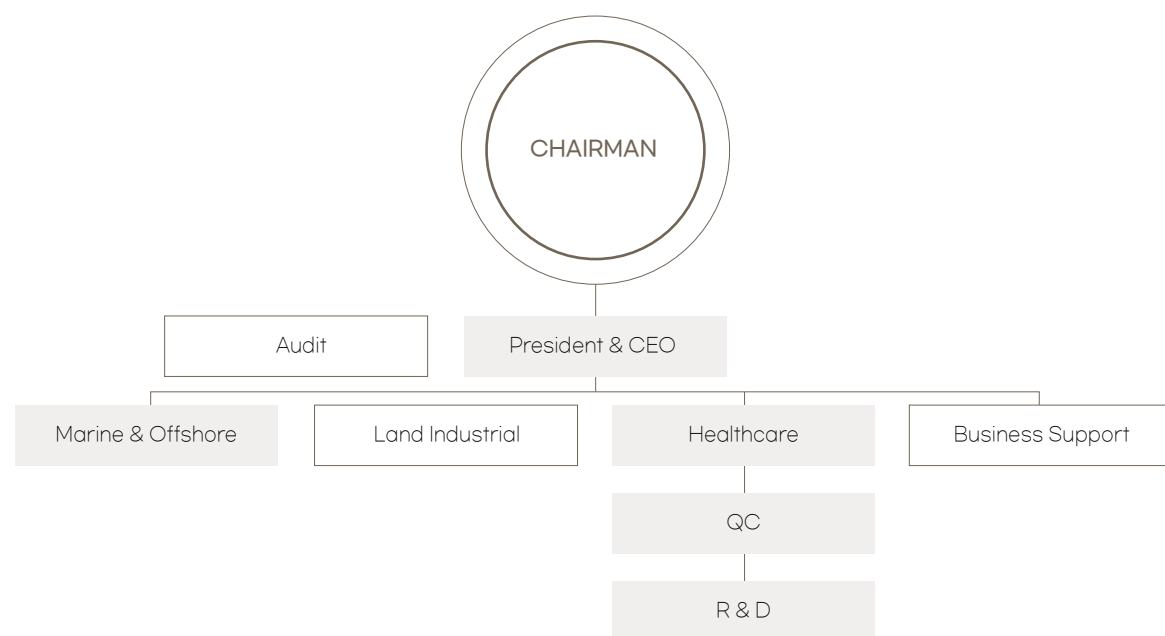
# NATIONAL EXPORT AWARDS



## COMPANY HISTORY

Mar	1995	Founded "AMS Co.,Ltd."
July	1998	Converted into a Corporation
Jan	2000	Expanded Business to Land/Industrial field
Nov	2002	Awarded USD 5 Million Export Tower and Industrial Service Medal from the Republic of Korea
May	2003	Awarded Special Appreciation Plaque from Busan, Metropolitan City of the Republic of Korea
Nov	2005	Awarded USD 10 Million Tower and Industrial Service Medal from the Republic of Korea
Jan	2007	Expanded abroad business operation: China, Mid East, South East Asia, Europe, South America, etc.
Oct	2015	Awarded USD 20 Million Tower and Industrial Service Medal from the Republic of Korea
Oct	2016	Awarded USD 30 Million Tower and Industrial Service Medal from the Republic of Korea
Oct	2020	Instituted Healthcare Department

## ORGANIZATION CHART



# GLOBAL BUSINESS PARTNERS

- **Japan**
  - Actree
  - Cosmo
  - Daikin MR Eng.
  - Fuji Furukawa ENG.
  - Fukuoka Shipbuilding
  - Hakodate Shipyard
  - HITZ
  - IHI
  - IMC
  - Increte
  - JFE
  - JGC
  - JMUC
  - KHI
  - KMC
  - Kyokuyo Dockyard
  - Meiwa Sangyo
  - MHI
  - Minami Nippon Shipbuilding
  - Mitsui E&S
  - Moritani
  - Naikai Zosen
- **China**
  - Namura Shipbuilding
  - Nippaku Sobi
  - NSR
  - Sanyo Shoji
  - Sasebo Heavy Ind.
  - SHI-ME
  - Shitanoe Shipbuilding
  - Steel Plantech
  - Takuma
  - Tsuneishi Shipbuilding
  - Ube Machinery Crop.
  - Usuki Shipyard
- **USA**
  - Excelerate Energy L.P.
- **Philippine**
  - THI(CEBU)
  - Herma Shipyard Inc.
- **Singapore**
  - NYK ship management
  - Swire Pacific Offshore
- **Russia**
  - Amur Shipbuilding Plant
- **Greece**
  - Sun Enterprises Ltd.
  - Eastern Mediterranean
- **Myanmar**
  - J&M
- **India**
  - ABG Shipyard
  - Bharati Shipyard
  - Pipavav Shipyard
  - Virgo Marine

